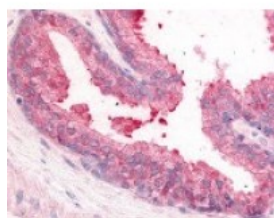




PDE8A Antibody

CATALOG NUMBER: 48-315



Immunohistochemistry staining of PDE8A
in prostate tissue using PDE8A Antibody.

Specifications

| | |
|-----------------------------|---|
| SPECIES REACTIVITY: | Dog, Gibbon, Gorilla, Horse, Human, Pig |
| TESTED APPLICATIONS: | IHC |
| APPLICATIONS: | PDE8A antibody can be used in ELISA starting at 1:10000, Western Blot starting at 1:500 - 1:2000, and immunohistochemistry starting at 1:200 - 1:300. |
| USER NOTE: | Optimal dilutions for each application to be determined by the researcher. |
| SPECIFICITY: | BLAST analysis of the peptide immunogen showed no homology with other human proteins. |
| IMMUNOGEN: | PDE8A antibody was raised against a peptide located in the near N-Terminus of PDE8A (Human). |
| HOST SPECIES: | Rabbit |

Properties

| | |
|----------------------------|--|
| PURIFICATION: | Immunoaffinity Chromatography |
| PHYSICAL STATE: | Liquid |
| BUFFER: | PBS, 0.1% sodium azide. |
| STORAGE CONDITIONS: | PDE8A antibody should be stored long term (months) at -80 °C and short term (days) at 4 °C. As with all antibodies avoid freeze/thaw cycles. |
| CLONALITY: | Polyclonal |
| CONJUGATE: | Unconjugated |

Additional Info

| | |
|-------------------------|---------------------------------------|
| ALTERNATE NAMES: | PDE8A, Phosphodiesterase 8A, HsT19550 |
| ACCESSION NO.: | O60658 |
| PROTEIN GI NO.: | 23503044 |
| OFFICIAL SYMBOL: | PDE8A |
| GENE ID: | 5151 |

Background

| | |
|--------------------|--|
| BACKGROUND: | Phosphodiesterase 8A, a high affinity, cAMP-specific phosphodiesterase, has been implicated in penile erectile |
|--------------------|--|

dysfunction. PDE8A activity is inhibited by dipyridamole, but not by rolipram, zaprinast, or IBMX. At least five splice variants and four protein isoforms have been reported.

FOR RESEARCH USE ONLY

December 13, 2016