

**Name: Rabbit polyclonal anti-TRA-2a antibody**  
**Product Data Sheet - ANTIBODY****Catalog: TA315400**

<b>Components:</b>	<ul style="list-style-type: none"><li>• Rabbit polyclonal anti-TRA-2a antibody (TA315400)</li><li>• 1 vial of 20ug myc-DDK tagged TRA2A HEK293T over-expression lysate lyophilized in RIPA buffer (LC415679). (Reconstitute into 20ul of 1x SDS sample buffer before loading; load 5ul per lane as WB control or as desired)</li></ul>
<b>Amount:</b>	100ul
<b>Immunogen:</b>	The antiserum was produced against synthesized peptide derived from internal of human TRA-2a.
<b>Host:</b>	Rabbit
<b>Isotype:</b>	IgG
<b>Species Reactivity:</b>	Human, Mouse
<b>Guaranteed Applications:</b>	WB, IHC, IF
<b>Suggested Dilutions:</b>	WB: 1:500~1:3000, IHC: 1:50~1:100, IF: 1:100~1:500, ELISA: 1:20000
<b>Concentration:</b>	1mg/ml
<b>Buffer:</b>	Phosphate buffered saline (without Mg <sup>2+</sup> and Ca <sup>2+</sup> ), pH 7.4, 150mM NaCl, 0.02% sodium azide and 50% glycerol.
<b>Purification:</b>	The antibody was affinity-purified from rabbit antiserum by affinity-chromatography using epitope-specific immunogen.
<b>Storage Condition:</b>	Shipped at -20C. Upon delivery store at -20C. Dilute in PBS (pH7.3) if necessary. Stable for 12 months from date of receipt. Avoid repeated freeze-thaws.

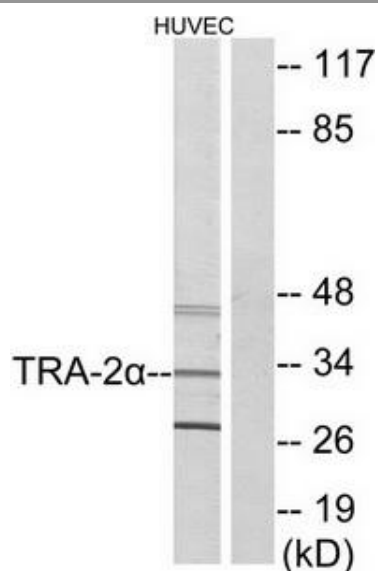
## Target

<b>Target Name:</b>	Homo sapiens transformer 2 alpha homolog (Drosophila) (TRA2A), transcript variant 1
<b>Alternative Name:</b>	AWMS1; HSU53209
<b>Database Link:</b>	NP_037425
<b>Function:</b>	

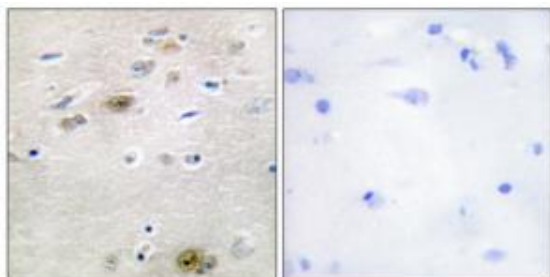
***This product is to be used for laboratory only. Not for diagnostic or therapeutic use.***

© 2014 OriGene Technologies, Inc. 9620 Medical Center Dr., Suite 200, Rockville, MD 20850

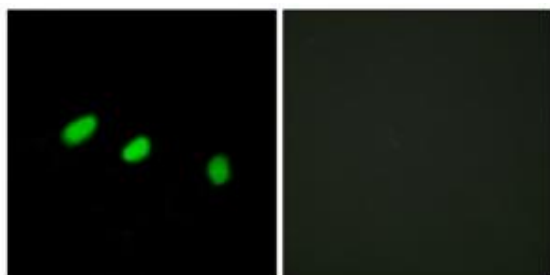
## Validation Data



Western blot analysis of extracts from HUVEC cells, using TRA-2a antibody. The lane on the right is treated with the synthesized peptide.



Immunohistochemistry analysis of paraffin-embedded human brain tissue using TRA-2a antibody. The picture on the right is treated with the synthesized peptide.



Immunofluorescence analysis of HeLa cells, using TRA-2a antibody. The picture on the right is treated with the synthesized peptide.

\* More validation images may be available on our website: <http://www.origene.com/antibody/TA315400.aspx>

***This product is to be used for laboratory only. Not for diagnostic or therapeutic use.***

© 2014 OriGene Technologies, Inc. 9620 Medical Center Dr., Suite 200, Rockville, MD 20850