

Name: Rabbit polyclonal PDCD4(Ser67) antibody(Phospho-specific)
Product Data Sheet - PHOSPHO**Catalog: TA315376**

Components:	• Rabbit polyclonal PDCD4(Ser67) antibody(Phospho-specific) (TA315376)
Amount:	100ul
Immunogen:	The antiserum was produced against synthesized phosphopeptide derived from human PDCD4 around the phosphorylation site of serine 67 (K-N-SP-S-R).
Host:	Rabbit
Isotype:	IgG
Species Reactivity:	Human, Mouse, Rat
Guaranteed Applications:	WB
Suggested Dilutions:	WB: 1:500~1:3000, ELISA: 1:1000
Concentration:	Lot dependent; please refer to CoA along with shipment
Buffer:	Phosphate buffered saline (without Mg ²⁺ and Ca ²⁺), pH 7.4, 150mM NaCl, 0.02% sodium azide and 50% glycerol.
Purification:	The antibody was affinity-purified from rabbit antiserum by affinity-chromatography using epitope-specific immunogen.
Storage Condition:	Shipped at -20C. Upon delivery store at -20C. Dilute in PBS (pH7.3) if necessary. Stable for 12 months from date of receipt. Avoid repeated freeze-thaws.

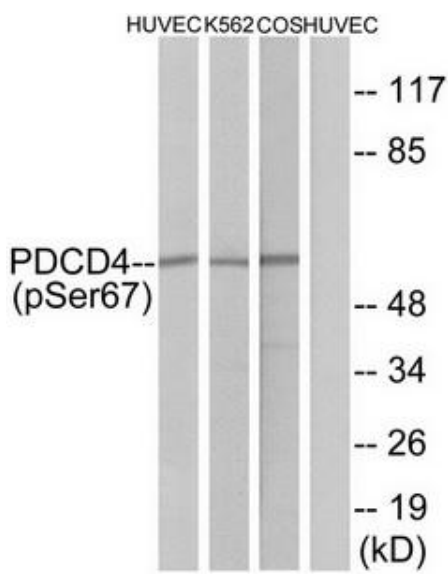
Target

Target Name:	Homo sapiens programmed cell death 4 (neoplastic transformation inhibitor) (PDCD4), transcript variant 2
Alternative Name:	H731
Database Link:	NP_663314
Function:	

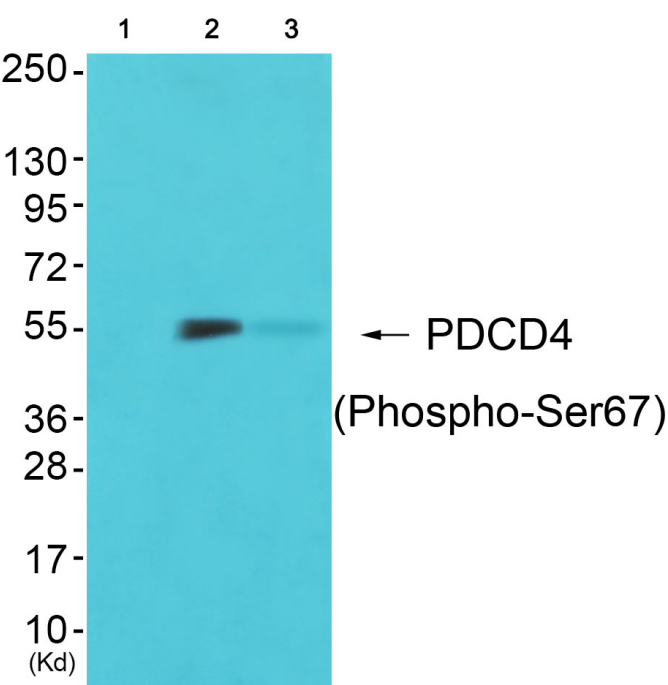
This product is to be used for laboratory only. Not for diagnostic or therapeutic use.

© 2014 OriGene Technologies, Inc. 9620 Medical Center Dr., Suite 200, Rockville, MD 20850

Validation Data



Western blot analysis of extracts from HuvEc cells, K562 cells and COS7 cells, using PDCD4 (Phospho-Ser67) antibody. The lane on the right is treated with the synthesized peptide.



Western blot analysis of extracts from 293 cells (Lane 2) and cos-7 cells (Lane 3), using PDCD4 (Phospho-Ser67) Antibody. The lane on the left is treated with synthesized peptide.

* More validation images may be available on our website: <http://www.origene.com/antibody/TA315376.aspx>